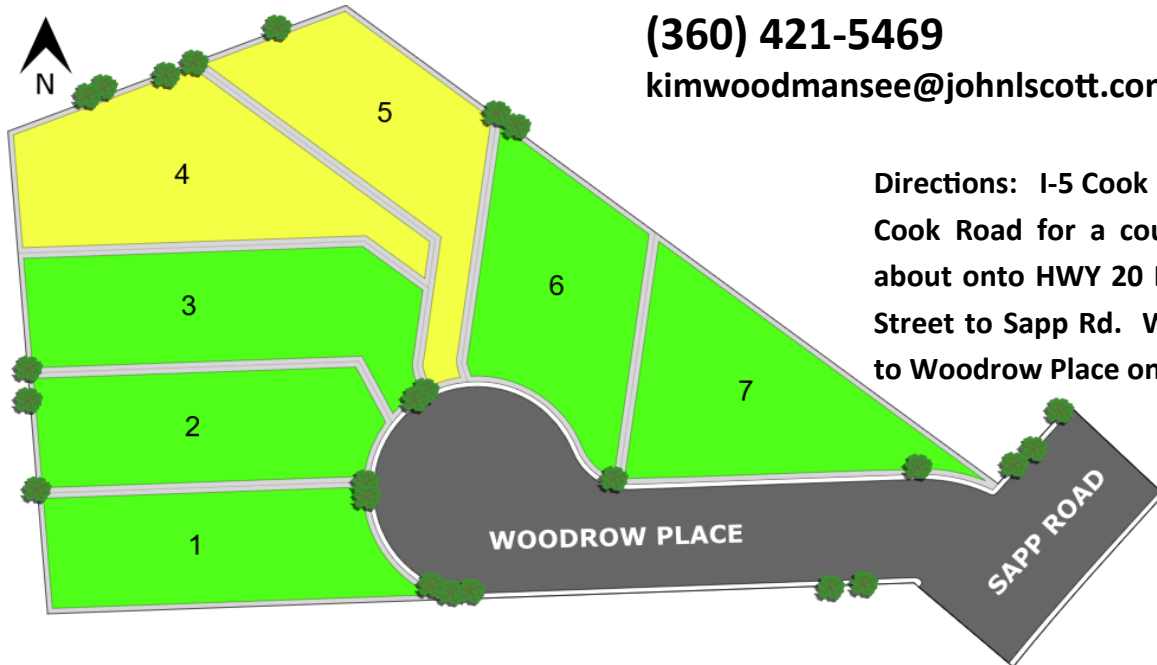


WOODROW PLACE



Kim Woodmansee, Broker
(360) 421-5469
 kimwoodmansee@johnlscott.com



Directions: I-5 Cook Road exit 232. Go East on Cook Road for a couple of miles take round about onto HWY 20 East. N or left onto Reed Street to Sapp Rd. West or left on Sapp Road to Woodrow Place on the right.



STYLE	LOT	PLAN	BDRMS	BATHS	GARAGE	PRICE
Rambler	1	1907	3	1.75	2	SOLD
Rambler	2	2007	4	1.75	2	\$465,900
Rambler	3	1907	3	1.75	2	\$450,900
Rambler	4	2007	4	1.75	2	\$465,900
Rambler	5	1869	2	1.75	3	\$459,900
Rambler	6	1630	3	1.75	2	\$445,900
Rambler	7	1766	3	1.75	2	\$444,900